

A misty forest landscape with a lake and evergreen trees. The scene is foggy, with tall evergreen trees in the background and a calm body of water in the middle ground. In the foreground, there are various green plants and shrubs. The overall atmosphere is serene and natural.

Northern Forest Alliance

*Conserving our Northern Forest
for strong communities and future generations*

FY10

Opportunities for
Strategic Conservation,
Strong Communities,
and a Vibrant Future

THE NORTHERN FOREST ALLIANCE

is a coalition of conservation, recreation and forestry organizations united in their commitment to protect the Northern Forest of Maine, New Hampshire, Vermont and New York.

A publication of the
Northern Forest Alliance
 54 Portsmouth Street
 Concord, NH 03301
 Telephone: (603) 832-3559
www.northernforestalliance.org

Cover photo: Larry Ely

VISION:

To achieve a sustainable future for the 26 million-acre Northern Forest, in which its wildlands are permanently protected, its forests are sustainably managed, and its local economies and communities are strong and vibrant.

MISSION:

To work together to protect and enhance the ecological and economic sustainability of natural and human communities in the Northern Forest.

GOALS:

The Alliance's priorities are threefold:

- To conserve wildlands in the Northern Forest to help protect the forest's ecological integrity, its recreational opportunities and its timber production;
- To encourage well managed private forests to support the forest-based economy, including high-value timber products, recreation tourism, and the jobs these industries support;
- To build strong, diverse, local economies that support vibrant communities throughout the Northern Forest.

CONTENTS:

Northern Forest Assets /	2
Shaping the Future: Programs Supporting the Northern Forest /	3
FY10 Conservation Priorities Map /	4
Conservation Priorities in the Northern Forest /	5
Community Enhancement and Forestry Programs /	6
Spotlight on the Mahoosuc Initiative /	7
Mahoosuc Region Conservation Opportunities /	8-9
Connecticut River Watershed/Quabbin to Cardigan Opportunities /	10-11
Maine Woods: Importance and Opportunities /	12-13
Forest Legacy Opportunities in Vermont /	14
Historic Conservation Opportunity in the Adirondacks /	15
A Call To Action for the Northern Forest /	16

The Northern Forest

Supporting Community Efforts to Promote Conservation and Economic Vitality

A Vast Forest in a Shrinking World

In the face of an increasingly crowded and developed world, the Northern Forest remains a distinctive place where forests and mountains overwhelm the senses, rural communities thrive in close connection with the natural world, and ties between neighbors remain strong. Even in the era of the Internet and cell phone, the Northern Forest remains solidly rooted in its heritage and traditions as people draw strength, and often their livelihoods, from the land.

Empowering Communities for Conservation & Sustainable Economies

Over the course of 2008, the Northern Forest Alliance created new synergy with local partners through a series of place-based conservation, policy, and economic initiatives. Highlights included:

- **Mahoosuc Initiative:** Our partnership with local communities helped to grow strong local support for the Mahoosuc Gateway/Success projects, the new Lake Umbagog NWR Conservation Plan, and led to the creation of a “touring map” supporting the growth of local tourism focused on the forest resources of the region.
- **Friends of Conte NWR:** The Friends worked to secure millions of dollars from LWCF for additions to the refuge along the Connecticut River, including in the Pondicherry Unit in New Hampshire and the Nulhegan Unit in Vermont.
- **Moosehead Lake:** Our outreach and education campaign helped area residents understand and address the impacts of large-scale real estate development on Maine’s rural, forest-focused communities, and contributed to changes made in the development proposal being considered by Maine’s Land Use Regulatory Commission.

In 2009, the Alliance will continue its impressive efforts in ways that will best address both the strengths and the needs of the Northern Forest region.

NFA Policy Initiatives Strengthen Northern Forest Communities

Following-up on the Alliance’s great success working with our Congressional Delegation to create new programs such as the Northern Border Regional Commission, the Community Wood Energy Program, and the Community Forest & Open Space Conservation Program, we are focusing increased energy on ensuring implementation of these and other programs that directly support the resiliency and vibrancy of communities in and reliant upon the Northern Forest. These programs and others, including important State & Private Forestry Programs and other rural development priorities, are critical to the economic future of the region and the long-term sustainable use of the region’s forests.

We urge you to join the effort. Start by contacting the Alliance today!



Northern Forest Assets

Large Intact Forests

The Northern Forest is one of the United States' greatest forests. It covers more than 26 million acres – larger than all of Vermont and New Hampshire combined – and stretches from the northern woods of Maine through New Hampshire and Vermont and into the Adirondack Mountains and Tug Hill regions of New York. Most of the Northern Forest is undeveloped forest that supports the region's economy and boasts a unique ecosystem supporting populations of critical bird, game, and non-game wildlife species.

Headwaters of the Northeast

The Northern Forest contains the headwaters of every major northeastern river, including the Hudson, Connecticut, and Androscoggin, connecting the fate of the region with more urbanized areas far away. Millions of Americans rely on this region to protect their water supplies.

High Quality Hardwoods

The Northern Forest is one of America's original fiber baskets, and remains an important source of wood products from pulp and paper to saw timber. The region is perhaps most noted for its high quality hardwoods and superior value-added manufacturing that help power a strong forest products industry.

Vibrant Communities

Throughout the Northern Forest are communities that have thrived since before the founding of the United States. The traditional economies of our northern region have been linked to the forest for more than 150 years. In the 21st Century, these communities face challenges as does the nation as a whole, but with a culture and economy based around the forest, the future looks bright indeed. Economic drivers for the 21st Century will include: forest products, outdoor recreation, tourism, green energy, and other existing and developing fields.



Shaping and Enhancing Our Future

Programs Supporting Forestry, Economic Development, and Conservation Enhance the Future of Northern Forest Communities

The **Forest Legacy Program** and **Land & Water Conservation Program** have proven to be the most important tools to fund land conservation in the Northern Forest. It is critical that funding for these programs be expanded to ensure that as opportunities for productive conservation arise, we continue the strong tradition of conservation that ensures public access, sustainable forestry, and a multitude of recreational opportunities.

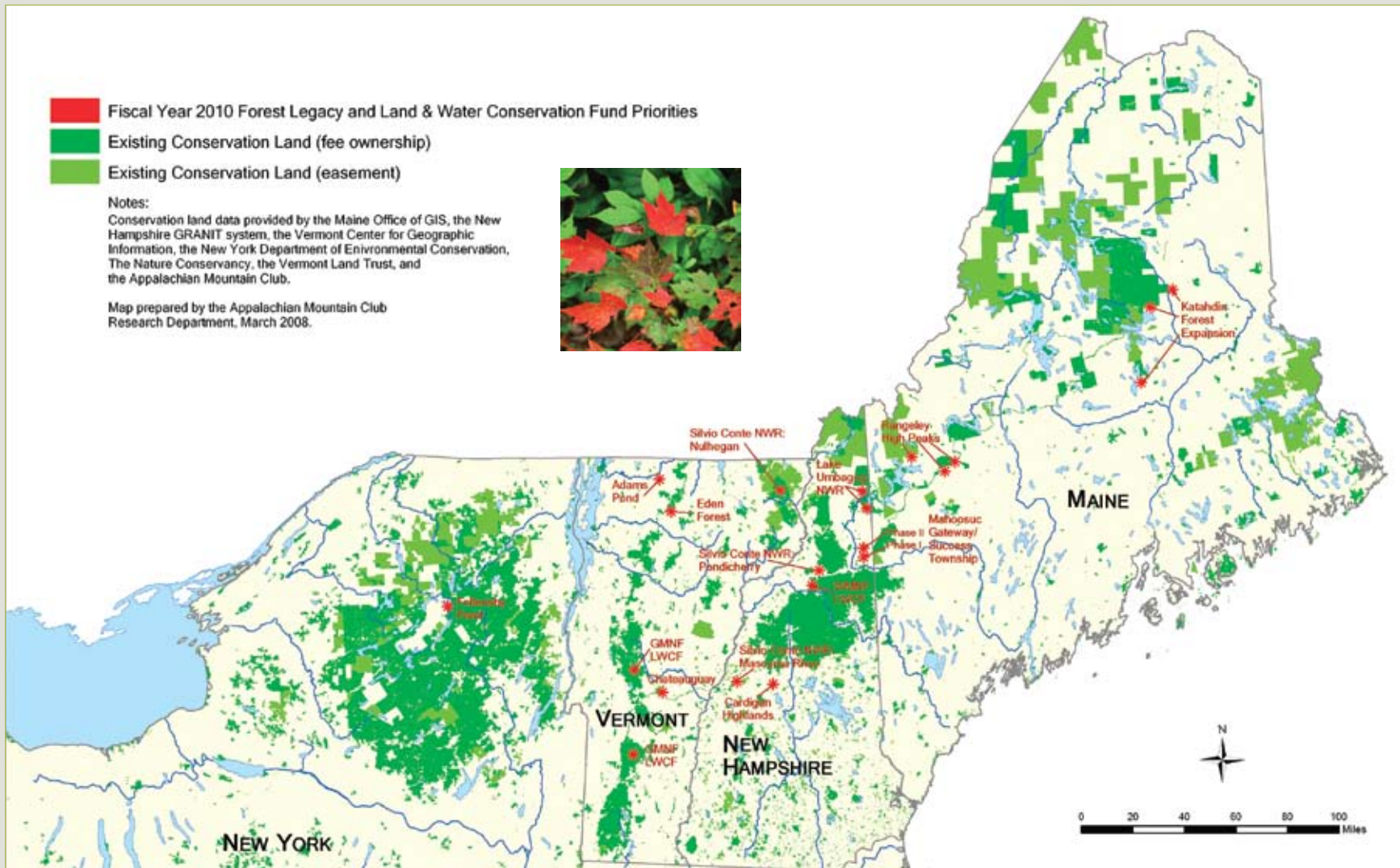
The **Northern Border Regional Commission** was created in 2008, after years of work by the Alliance and the Northern Forest Congressional Delegation. Authorized at \$30 million per year for the region, this program will enable Northern Forest states to address forestry, tourism, conservation, infrastructure improvements, telecommunications improvements, and other critical needs with spending decisions made by the four State Governors.

The **Community Forest & Open Space Conservation Program** was passed in 2008, after years of work by the Alliance and our partners. This program adds a crucial element to conservation in the region with its clear focus of enabling communities to acquire Town Forests and the many benefits they provide.

State and Private Forestry Programs including the **Forest Stewardship Program**, **Urban & Community Forestry**, **Cooperative Lands Forest Health Program**, and the **State Fire Assistance Program** are crucial to the sustainable use and management of the region's forests and empower State and Local governments to provide vital services to forestland owners.

The **Community Wood Energy Program**, like the **Community Forest and Border Commission** programs, was created in the Farm Bill of 2008. This program is designed to assist communities in creating wood-energy systems to provide heat and/or power for municipal buildings and enable them to utilize locally sourced wood for their heat and power.

FY10 Northern Forest Conservation Priorities



FY10 Northern Forest Conservation Priorities

Forest Legacy Program Needs:

Maine

The Katahdin Forest Expansion and Rangeley High Peaks projects will conserve more than 33,000 acres of the famed Maine Woods, including working forests, recreation lands, wildlife habitat, and community-oriented forestlands in the Katahdin and High Peaks regions.

New Hampshire

The Cardigan Highlands project in the Quabbin to Cardigan corridor, that will conserve more than 9,000 acres, seeks FY10 funding to ensure completion. The Mahoosuc Gateway/Success Township Phase II project, near Berlin, provides the opportunity to ensure that more than 15,000 acres of forest in the heart of the Mahoosuc Region is available for forestry and recreation in perpetuity.

Vermont

The Eden Forest and Adams Pond projects will protect more than 7,600 acres in the Northern Greens Corridor, a critical area for conservation for forestry, habitat, and recreation in the northern region of the state.

New York

The Follensby Pond project, in the midst of the Adirondacks, will conserve more than 14,000 acres long sought for inclusion in the Adirondack Park and will enable sustainable forestry and recreational access to continue in perpetuity.

Land and Water Conservation Fund Needs:

New Hampshire & Maine – Mahoosuc Region

The Mahoosuc Gateway/Success Township Phase I and Lake Umbagog NWR LWCF projects will together protect more than 9,000 acres in the Mahoosuc region, a critical linking landscape between NH and ME, supporting communities, recreation access, and critical habitats in both states.

New Hampshire & Maine – White Mountain National Forest

The White Mountain National Forest will use LWCF funds to conserve nearly 700 acres, in multiple parcels, to protect watersheds, meet an increasing demand for recreational activities, and reduce forest fragmentation.

New Hampshire & Vermont – Silvio O. Conte National Wildlife Refuge

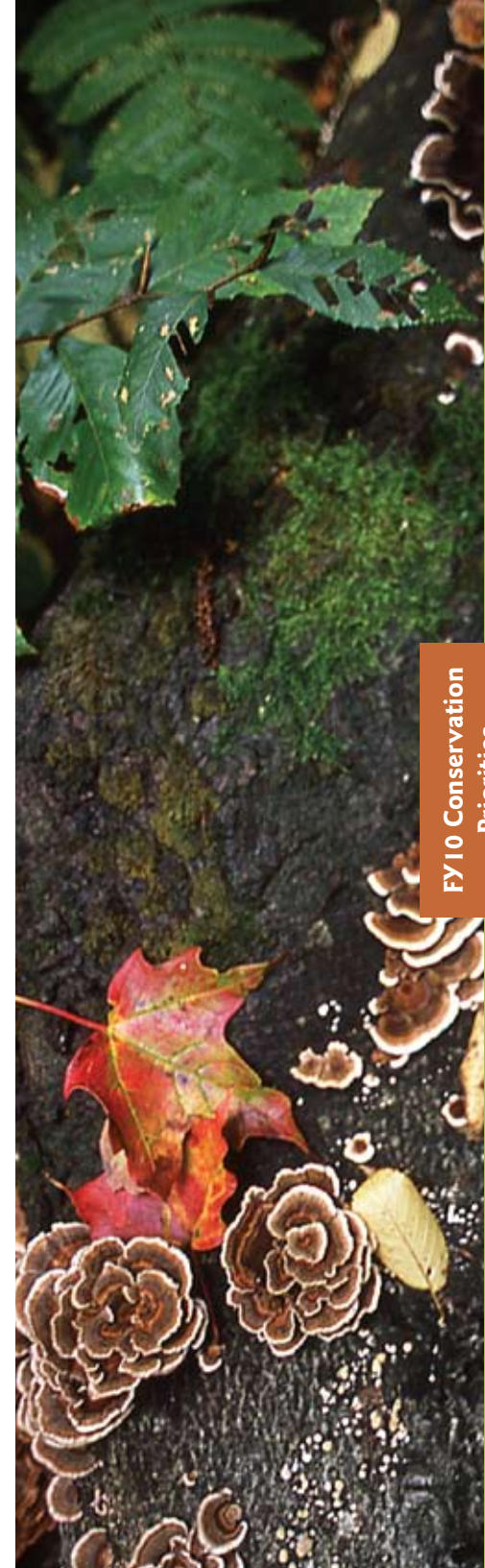
LWCF Projects in the Silvio O. Conte NWR will protect critical habitat and other natural assets for communities throughout the four-state Connecticut River watershed including vital habitats in the Pondicherry and Nullhegan Units in New Hampshire and Vermont, and potentially in the proposed Mascoma River Unit in New Hampshire.

Vermont – Green Mountain National Forest

Green Mountain National Forest will use LWCF funds to conserve more than 1,500 acres in the Green Mountains, including wildlife habitat and recreational trail access. The Green Mountain National Forest intends to purchase multiple parcels in the Northern and Southern sections of the Forest.

Vermont – Appalachian National Scenic Trail

The National Park Service's Chateaugay – No Town Project will protect a critical 1000-acre parcel for inclusion within the Appalachian National Scenic Trail. This parcel has long been a priority for acquisition by the Park Service and the project has strong local support from the surrounding towns.



Community Enhancement and Forestry Funding Priorities

Vital Programs Supporting Critical Needs

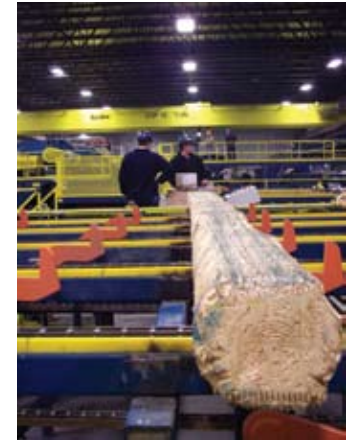
A Partnership for the Future of the Northern Forest

In recent years, the Alliance has worked hard to ensure passage of new programs in the Federal Farm Bill supporting a broad range of community needs including conversion to locally-based green energy systems, business development, land-use planning, job training, land conservation, high-speed internet infrastructure, acquisition of community forests, tourism development, and more. Following our success working with the Northern Forest Delegation to create the **Northern Border Regional Commission**, the **Community Wood Energy Program**, and the **Community Forest & Open Space Conservation Program** in the 2008 Farm Bill, we spearheaded actions in the region in support of critical State & Private Forestry programs funded by the US Forest Service. It is vital that these programs that directly support a broad range of Northern Forest communities' needs be funded at the highest levels possible. The partnership between the Alliance, partner organizations, communities, and the Northern Forest delegation is critical to this success.

Concerted effort is appropriate to help ensure the timely funding and implementation of the **Northern Border Regional Commission** to ensure that critical funding priorities can be acted upon expeditiously. The Commission's focus on implementing state and regional planning efforts, funding telecommunications, infrastructure and transportation projects, forestry initiatives, tourism and conservation efforts, and more, will help bring needed focus and funding to these critical regional needs that the Alliance has been working on since its inception. As an early endorser and driving force behind the passage of the Commission, the Alliance is excited to work with our congressional delegation, state governments, and many partners toward the successful implementation of this program.

Passage in 2008 of the **Community Wood Energy Program** and **Community Forest & Open Space Conservation Program** is exciting for the Alliance and for all communities desiring a more locally-empowered and locally-controlled future. These programs help ensure that communities have the opportunity to own, manage, and direct the use of their most important forests, and also to use locally grown wood to power municipal buildings rather than continue depending on the oil economy. The Alliance looks forward to assisting in the effort to implement these programs and ensure that they are utilized effectively within the Northern Forest.

In 2008, the Alliance greatly increased our efforts in support of a suite of programs within the U.S. Forest Service's State and Private Forestry program that support resilient communities, sound forest stewardship, and the forest-based economy. We are excited to continue and broaden these efforts to help realize our long-term goal of sustainable forestry as the norm in the Northern Forest region. Programs including the **Forest Stewardship Program**, **Urban & Community Forestry**, the **Cooperative Lands Forest Health Program**, and the **State Fire Assistance Program** are critical to the needs of Northern Forest communities. These programs ensure that resources are available to support the shared goal of landowners, state, and local governments to manage their forestlands to the highest standards of sustainability.



Spotlight on the Mahoosuc Initiative

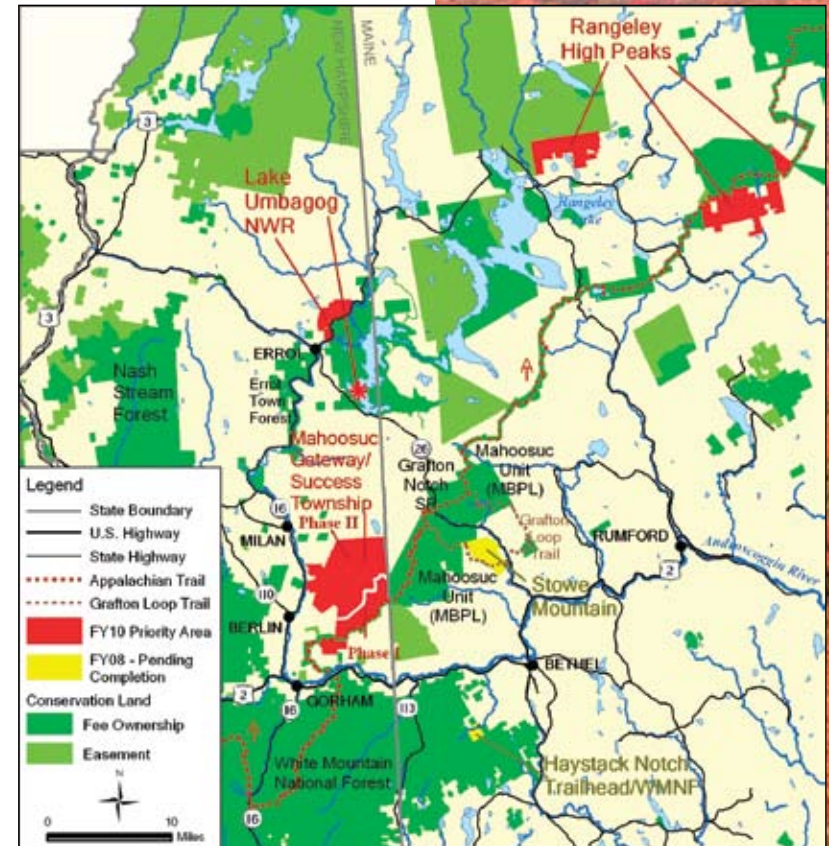
Where the Alliance's Community, Conservation, and Leadership Roles Come Together

Spanning 600,000 acres from the White Mountains of New Hampshire to the Western Mountains of Maine, the Mahoosuc region is a treasure trove of productive forests, unique natural resources and world-class recreational opportunities. It is home to the people of Errol, Berlin, Gorham, Bethel, Newry, and other towns, all of which remain connected to the land through a forest-based economy and a culture more than two centuries old. To protect and enhance the Mahoosuc region's many values – and to counter the forces that now threaten them – significant attention and investment is urgently needed.

The Mahoosuc region is at a crossroads. Actions taken in the next five years will play a determining role in how the region looks, feels, and functions for future generations. Many Mahoosuc communities are struggling with mill closings, economic globalization, and the destabilizing effects of large land sales. Additionally, large blocks of forest are vulnerable to intensifying development pressures that threaten to unravel the region's cultural identity, forest-based economy, and ecological sustainability. Land protection projects totaling more than 35,000 acres hang in the balance and significant investment is needed to complete these projects as well as to lay the groundwork for conservation projects that are sure to emerge in the near future.

Recognizing the changes faced by this region and the opportunity to help create a new model, several years ago the Alliance joined forces with local, state, regional, and national organizations to create the Mahoosuc Initiative. The Initiative works cooperatively on a portfolio of conservation and economic enhancement projects to address the region's needs. The Initiative has created synergy between efforts to support sustainable forestry, economic development, and land conservation. Ongoing efforts include a project to help site and fund new community-scale biomass facilities, the development and distribution of a regional touring map featuring sites in both Maine and New Hampshire, and support of exciting land conservation projects across the region.

While the challenges are great, so are the opportunities. The Mahoosuc region is blessed with strong, energized communities that are eager to shape their own future and protect the culture and landscape that defines them. Working with local citizens, members of the Mahoosuc Initiative are building momentum around a coordinated, multi-partner strategy designed to enhance community capacity; strengthen the local economy through forest-based businesses related to forest-products, tourism, and renewable energy; utilize natural resources locally; and conserve important forestlands across the region.



Land and Water Conservation Fund Projects in the Mahoosuc Region

Lake Umbagog NWR, New Hampshire & Maine

Situated in the Mahoosuc Region along the border of northern New Hampshire and western Maine, Lake Umbagog is the westernmost link in the chain of Rangeley Lakes, famed for their excellent recreational opportunities as well as for possessing some of the finest wildlife habitat in the two states. The refuge protects unique habitat for many wetland dependent and migratory species including bald eagle, peregrine falcon, waterfowl species such as the declining black duck, and many species of federal and state concern including common loon, northern harrier, woodcock, and others. In addition, the refuge is a critical recreational asset for the region and provides a strong boost to the local tourism industry.

In partnership with the State of New Hampshire, the U.S. Fish and Wildlife Service has an established program of land acquisition at Lake Umbagog. An appropriation of \$4,500,000 in FY 2010 from the Land and Water Conservation Fund would be used to fund the Refuge's current acquisition priorities: the acquisition of a conservation easement on 157-acre Big Island and the new 2,933-acre Androscoggin Headwaters project, which is part of a larger tract of over 31,000 acres of prime forest lands. Taken together, the projects will help ensure continued resource protection for this jewel of northern New England, and build on a series of significant federal investments in the refuge in recent years.

PROJECT DETAILS:

Size: 3,090 acres

Type: Conservation easement and Fee acquisition

FY10 LWCF Request: \$4.5 Million

Total Project Cost: \$6.045 Million

Project Sponsor: Society for the Protection of New Hampshire Forests, The Trust for Public Land

Mahoosuc Gateway/Success Township Phase I (Appalachian Trail)

The Success Township LWCF project will add about 4,700 acres to the corridor of protected land around the Appalachian National Scenic Trail. In addition, the Mahoosuc Gateway Phase I project will fund acquisition of an easement upon a 1,200 acre parcel of forestlands abutting the Appalachian Trail to the south. This stretch of the trail is among the most famed and revered, crossing high elevation balds and leading to the trail's feared "toughest mile" through Mahoosuc Notch. The project lands are particularly important for recreation access to this popular area because they contain a number of heavily used side trails up from Success Pond Road. Conserving these lands will help assure continued public access for day hikes and other shorter adventures. The project lands will be complemented by additional areas to the south of the trail corridor recently conserved by The Conservation Fund in partnership with local communities and landowners. The parcel is nothing short of a lynchpin to conservation of the Mahoosuc Range, and will enable additional conservation of working forestlands that lie adjacent to the north .

PROJECT DETAILS:

Size: 5,970 acres; 4,770 acres fee, 1,200 acres easement

Type: Fee acquisition and Conservation easement

FY10 LWCF: \$1.375 Million

Total Project Cost: \$4.8 Million

Project Sponsor: The Conservation Fund



Forest Legacy Projects in the Mahoosuc Region

Mahoosuc Gateway/Success Township Phase II

The people and land are inexorably linked in North Country New Hampshire with no greater example than along the Androscoggin River Valley, and in the Mahoosuc and White Mountains, a landscape that has defined life and provided livelihood for centuries. However, in the last two decades, Coos County and Berlin, New Hampshire, “The City that Trees Built,” have seen the economy built on the forests collapse with the closing paper mills and subdivision of larger forest tracts.

The 15,200 acres of the Success Township project are the “back yard” of the cities of Berlin and Gorham; its proximity increases its importance and the potential threat. It is a noted resource to be protected for its recreational and timber values in the Berlin Economic Development Plan, the Coos Economic Action Plan and the Mahoosuc Region Resource Report. Potential economic benefits from this land in the future include wood to energy opportunities, sustainable fiber harvest, potential educational forestry collaboration with local college and schools, permanent hunting, fishing and trapping access and conservation of wildlife habitat and water quality, and myriad non-motorized and motorized recreational opportunities.

PROJECT DETAILS:

Size: 15,200 acres

Type: Conservation easement

FY10 Forest Legacy Request: \$5.0 Million

Total Project Cost: \$8.0 Million

Project Sponsor: The Conservation Fund



Rangeley High Peaks – Phase I

The Rangeley High Peaks Project consists of three parcels totaling 13,446 acres in Rangeley, Madrid, and Mount Abram Townships. The State of Maine will acquire fee interest in the Ridge Tract, consisting of 1,163 acres of high elevation forestland bordering multiple parcels already under State and Federal ownership. The Ridge Tract includes one of only three snowmobile ridge crossings along the entire 32-mile stretch of the Appalachian Trail in the High Peaks region and provides buffering for the A.T. The Orbeton Tract will be protected with a conservation easement held by the State of Maine. This 5,900-acre parcel consists of mid-elevation timberland and includes a 3.5-mile section of Orbeton Stream, the site of an Atlantic Salmon restoration effort. The Rangeley Tract is a 6,383-acre tract that will be protected with a conservation easement to be held by the State of Maine. The Rangeley Tract abuts 74,000 acres of conservation land and includes over three miles of pond frontage. The project area’s exceptional natural resource amenities and recreational opportunities, both motorized and non-motorized, bring it under increasing pressure of conversion to non-forest uses.

PROJECT DETAILS:

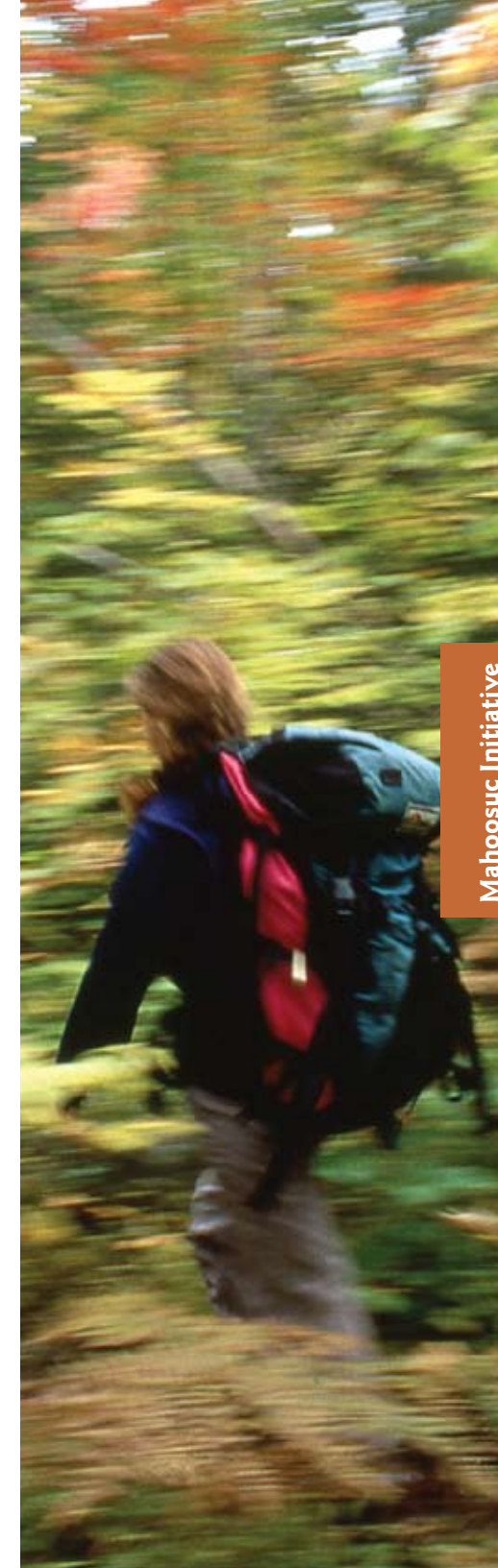
Size: 13,446 acres

Type: Conservation easement and Fee acquisition

FY10 Forest Legacy Request: \$3.46 Million

Total Project Cost: \$4.61 Million

Project Sponsors: Rangeley Lakes Heritage Trust, Maine Appalachian Trail Land Trust



The Geographic Center of the Northern Forest

Connecticut River Watershed and Quabbin to Cardigan Corridor

Historic Landscapes and Critical Habitats at Risk

Current residents of this watershed are nurtured and connected by the Connecticut River's pure waters, rich soils, and highly productive forests. Residents share an appreciation of the Connecticut River watershed as a natural treasure, and a linking corridor for fish, birds, and wildlife. However, U.S. Forest Service research informs us that the Connecticut River watershed is threatened by development in the coming decades. Throughout the region there are exciting and ambitious community-led efforts to conserve the productive forests, wildlife habitat, and open public access that are so treasured by local residents.

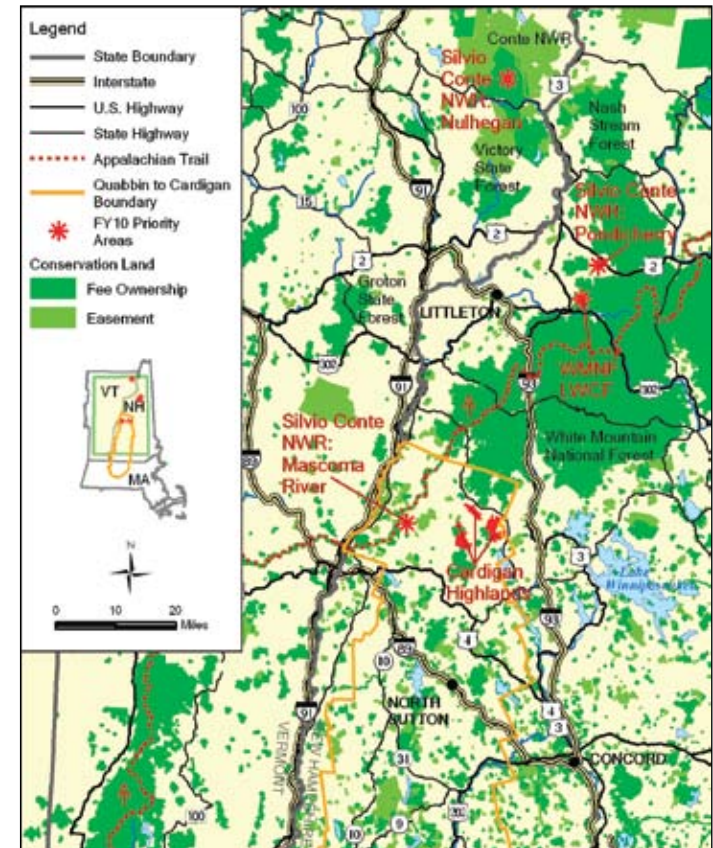
Silvio Conte National Wildlife Refuge, VT/NH/MA/CT

In 1991, when Congress passed and President George H.W. Bush signed legislation establishing the Silvio O. Conte National Fish and Wildlife Refuge (Refuge), the U.S. Fish and Wildlife Service (Service) was charged to study and strategically conserve the aquatic and terrestrial habitat resources of the entire 7.2 million acre Connecticut River watershed. The watershed comprises fully one-sixth of New England and is home to 2.3 million residents, as well as to hundreds of plant and animal species, many of which are priorities for state and/or federal protection. The Refuge was founded on three pillars: land protection, cooperative management, and environmental education. Its unique enabling legislation requires new approaches to working with diverse partners in Connecticut, Massachusetts, New Hampshire, and Vermont. Through partnership efforts, including helping to create the Friends of Conte Refuge, the Alliance supports long-term conservation of the most important habitats within the Conte Refuge.

Quabbin to Cardigan

Corridor for Wildlife and Recreation in an area of Working Forests and Thriving Communities

The Quabbin to Cardigan Conservation Partnership is working to conserve priority lands within the 2 million-acre Monadnock Highlands of Massachusetts and New Hampshire. The Monadnock Highlands are one of New England's most important remaining forest blocks, featuring highly productive timberlands, valuable recreation and wildlife lands, and headwaters for the Merrimack and Connecticut Rivers. The 25-member "Q2C" Partnership, led by the Society for the Protection of New Hampshire Forests, has identified more than a million acres of core conservation lands and complementary areas that deserve conservation and good stewardship. These lands form an impressive corridor stretching from the pristine Quabbin Reservoir in central Massachusetts all the way to New Hampshire's Cardigan Mountain, which lies on the edge of the White Mountain National Forest.



Forest Legacy: Cardigan Highlands

The Cardigan Highlands project will conserve nearly 9,300 acres of ecologically exceptional working forest between Mount Cardigan and the White Mountain National Forest through a Forest Legacy easement. The project comprises two tracts - the 6,578 acre Green Acres Woodlands tracts and the 2,700 acres Kimball Hill tract. The two tracts were reviewed and ranked by the New Hampshire Forest Legacy Committee as separate projects for FY09, and were ranked #2 and #3 respectively.

The Cardigan Highlands project protects the full range of ecosystem services targeted by the Forest Legacy program, including productive timberland and unique forest communities, high-quality surface and ground water, exceptional fish and wildlife habitat, and extensive recreational and historic resources. As working woodlands, the Cardigan Highlands tracts yield a sustainable annual flow of fiber to area pulpwood markets, logs to local and regional sawmills, and biomass chips to local wood energy plants. Field surveys of the Green Acres and Kimball Hill tracts have confirmed exemplary natural communities including pockets of mature northern hardwood-spruce fir forest, an acidic sphagnum forest seep, intact old growth forest, spectacular gorges, and red spruce swamp.

PROJECT DETAILS

Size: 9,278 acres

Type: Conservation easement

FY10 Forest Legacy Request: \$3.77 Million

Total Project Cost: \$4.95 Million

Project Sponsor: Society for the Protection of New Hampshire Forests

LWCF: Silvio O. Conte National Wildlife Refuge - NH, VT, MA, CT

With the strong endorsement of the Friends of Silvio O. Conte NFWR, the Conte refuge is seeking \$2.965 million from LWCF for acquisitions in VT, NH, MA, and CT. There are important opportunities for refuge acquisitions that will enhance the conservation value of existing units and create a new Conte refuge presence in other areas. Opportunities in Vermont include acquisition of inholdings in the Nulhegan Unit, which will support ongoing efforts to improve recreation opportunities for visitors. Opportunities in New Hampshire include important additions to the Pondicherry Unit that will conserve wetland habitat and other key natural areas. In New Hampshire, there is an exciting opportunity that is ready to go pending approval of the new Mascoma River Unit in the Comprehensive Conservation Plan currently working towards completion. Additional opportunities include valuable acquisitions in Massachusetts and Connecticut. Acquisition of these parcels will protect water quality and wildlife habitat and support efforts by the Friends of Conte and the U.S. Fish and Wildlife Service to improve public recreation and educational programs across the refuge's diverse conservation focus areas.

PROJECT DETAILS

Size: Varies by unit

Type: Fee

FY10 LWCF Request: \$2.965 Million

Project Sponsors: The Nature Conservancy, The Trust for Public Land, The Conservation Fund

Maine Woods: Importance and Opportunities

The Historic Heart of the Northern Forest and the Alliance

Since the Northern Forest Alliance was created more than fifteen years ago, the Maine Woods has been an area of critical importance for the Alliance and a centerpiece to many conservation and community projects.

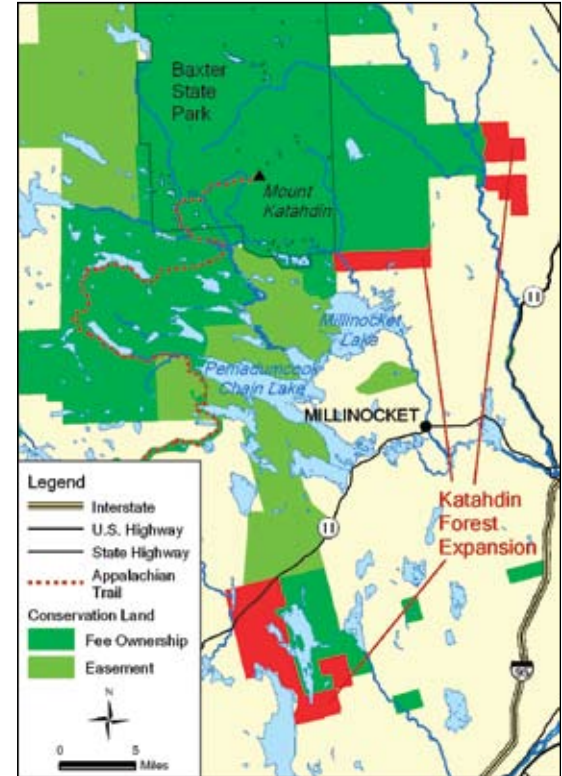
From conserving vast tracts of the forest to organizing communities to help them address change, the Alliance has always believed that what happens in the Maine Woods is a marker for what may occur elsewhere in the Northern Forest. Like much of the Northern Forest, the Maine Woods still feels remote and pristine. But it is increasingly accessible and attractive to new residents and second-home owners. In this increasingly crowded world, the Northern Forest Alliance is dedicated to protecting the region's traditions and the diverse values of its forests that include:

Timber and Fiber – A strong forest industry remains vital to the region's future.

Outdoor Recreation – Diverse recreation opportunities, from skiing and paddling to hunting, trapping, and snowmobiling, are central to the region's cultural heritage and economy.

Fish and Wildlife – The Maine Woods supports diverse fish and wildlife populations. Both game and non-game species are culturally and economically significant.

Since 1998 a staggering 6.8 million acres – well over half of Maine's Northern Forest – have been sold to new owners. Land ownership has moved from a few traditional timber companies with long-term interests to a larger number of landowners with varying short-term goals: REITs like Plum Creek, timber investment management organizations (TIMOs), pension funds, and private landowners buying so-called "kingdom lots" for their personal use. The Alliance is committed to working as a coalition, with new local partners, and with our Congressional Delegation, to sustain the many values of the Maine Woods and ensure that this vast region continues to thrive.



Forest Legacy: Katahdin Forest Expansion, Maine

The Katahdin Forest Expansion Forest Legacy project will conserve 19,647 acres of strategically placed inholdings and buffer areas among state lands in the Katahdin Region – an area of more than 500,000 acres that includes Seboeis Lake, the 100-Mile Wilderness, Baxter State Park, and the Allagash Wilderness Waterway. All five properties in the project have traditionally been under active commercial forest management and key contributors to the local wood-products industry and the economies of Millinocket and Brownville. In addition, the properties contain critical wildlife habitat, including nesting areas for 29 loons on Seboeis Lake and a major deer-wintering area west of Northwest Pond.

The project will ensure highly valued recreational opportunities for sportsmen and anglers, and keep Maine's popular snowmobile trail ITS 85 open in the face of proposed closure. These lands are also critical for hikers because they are part of the viewshed from the peak of Mount Katahdin, and spectacular views of that iconic mountain can be seen from the project area.

PROJECT DETAILS

Size: 19,647 acres

Type: Fee

FY10 Forest Legacy Request: \$3.7 Million

Total Cost: \$9.0 Million

Project Sponsor: The Trust for Public Land



Forest Legacy Opportunities in The Green Mountain State



Eden Forest, Vermont

The Eden Forest project will use Forest Legacy funding to conserve 5,739 acres of highly productive working forest adjacent to Vermont's famed Long Trail. Eden Forest is a highly strategic conservation parcel, situated within a 30,000-acre block of unfragmented working forest along Vermont's Northern Green Mountains. The size of this property presents a unique opportunity to conserve both lowland and upland forest habitat that contains the watershed of two Gihon River headwaters streams and the partial summits of Bowen and Butternut Mountains.

The property's key habitats include black bear production areas that support high densities of cub-producing females. Once conserved, the property will provide a substantial buffer to the Long Trail and some of its most important side trails while allowing other public recreational activities such as hunting and snowmobiling to continue. The project will also protect a scenic viewshed seen from Route 100 and Route 118 that is a vital tourism resource.

PROJECT DETAILS

Size: 5,739 acres

Type: Conservation Easement

FY10 Forest Legacy Request: \$2.2 Million

Total Project Cost: \$5.33 Million

Project Sponsor: The Trust for Public Land



PROJECT DETAILS

Size: 1,932 acres

Type: Conservation Easement

FY10 Forest Legacy Request: \$1.62 Million

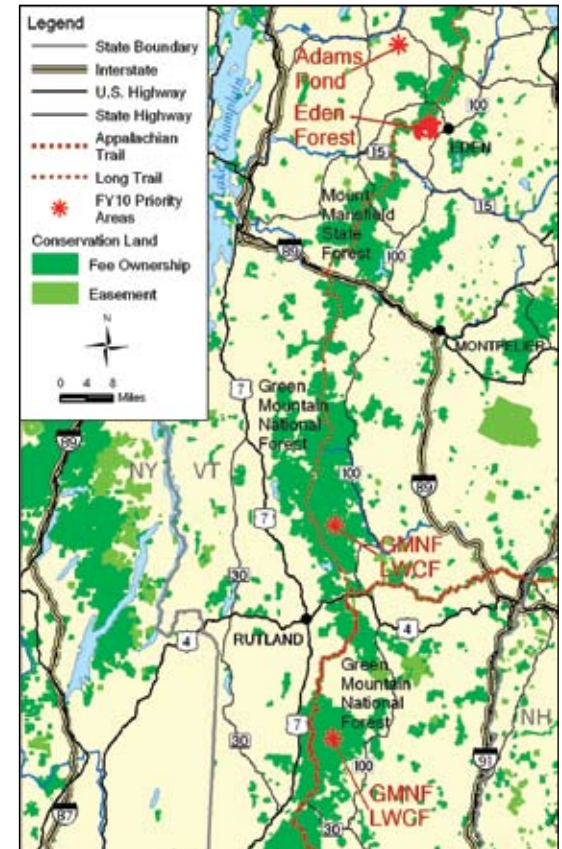
Total Project Cost: \$2.17 Million

Project Sponsor: Vermont Land Trust

Adams Pond, Vermont

The Adams Pond project will use Forest Legacy funding to conserve 1,932 acres of productive working forest in eight parcels near Vermont's Northern Green Mountains. This cooperative effort to conserve local forestlands, led by the local landowners themselves, can be a model for conservation in this part of Vermont.

This project lies in the heart of the Cold Hollow to Canada Forest Link, identified by the Wildlands Project, The Nature Conservancy, and Two Countries-One Forest as a critical wildlife habitat area that is at particular threat of development due to its proximity to so many growing population centers in Vermont and Quebec. A conservation easement on these parcels would ensure that rather than being fragmented over time, these lands will continue to be available for forest management, wildlife habitat, and recreational access in perpetuity.

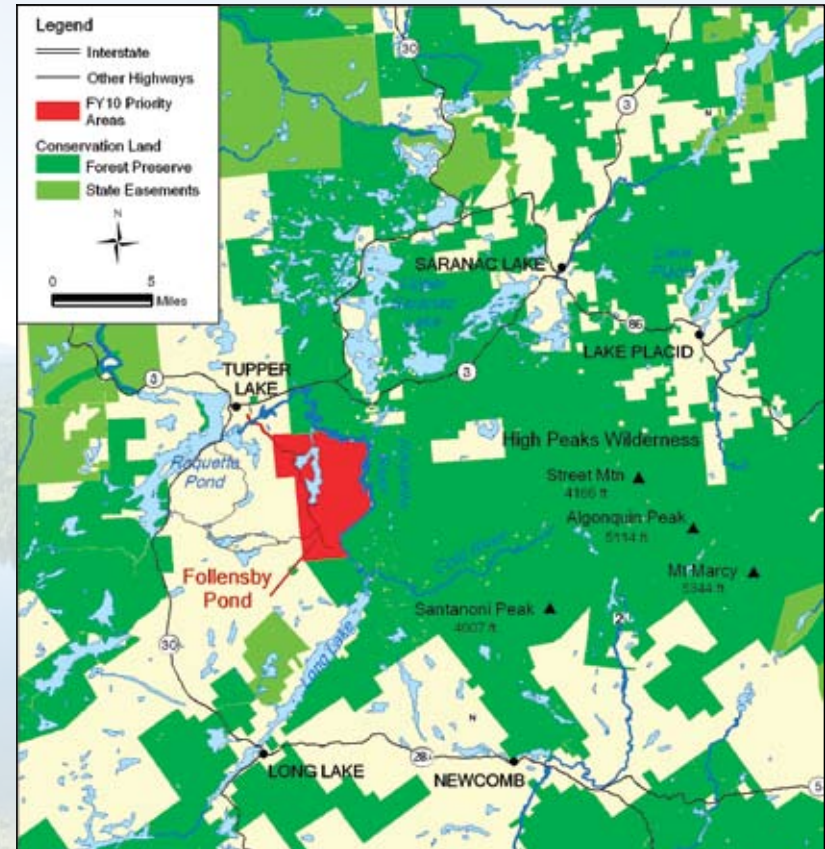


Historic Conservation Opportunity in the Adirondacks

Forest Legacy – Follensby Pond, New York

The historic Follensby Pond Tract – situated in the heart of the most breath-taking portion of New York’s Adirondack Mountain region – represents a rare conservation opportunity of unparalleled ecological and cultural significance. One of the last great intact, undeveloped Adirondack parcels, Follensby’s 14,600 acres include: 10 miles of frontage on one of New York’s longest and most important rivers, the Raquette; the 970-acre Follensby Pond; and a 15-mile boundary (on three of its four sides) with state-owned “forever wild” Preserve lands, including the 197,511-acre High Peaks Wilderness Area to the east. The parcel contains high-quality forests, wetlands, and waters, including 11.5 miles of undeveloped shoreline on the Pond, a remote section of which was the site of a successful bald eagle reintroduction program in the 1980s. It has been identified as a high priority for protection through a region-wide “highest conservation priority mapping” process, that built on decades of ecological assessment work within the Adirondacks. Additionally, the site has considerable historic importance as the place where, in 1858, Ralph Waldo Emerson convened the “Philosophers’ Camp,” an extended meeting of the best-known thinkers of the day. At this camp, they tested their mettle for the first time in a truly wild setting, famously honing the principles of Transcendentalism, which in turn gave rise to the American conservation movement.

The 6-million-acre Adirondack Park, the largest protected area of any kind in the continental U.S. is actually a mosaic of public and private lands. Less than half the land, however, is “park” (protected as “forever wild” by the state constitution), leaving many ecologically significant places vulnerable to damaging alterations. Adirondack forests typically have more short-term financial value subdivided and developed as vacation properties than as timberland. Even in difficult economic times, the Adirondacks are attractive to those seeking seasonal homes, and the Tupper Lake area, which includes Follensby Pond, is no exception. Because of the Pond’s celebrity status, location, and recreational values it is a prime target for development.



PROJECT DETAILS

Size: 14,600 acres
Type: Fee acquisition
FY10 Forest Legacy Request: \$7.0 Million
Total Cost: \$19.0 Million
Project Sponsor: The Nature Conservancy

Conserving the Northern Forest and its Communities

A Call to Action

Now More Than Ever – A Place and Time of Hope

The Northern Forest remains a place brimming with positive energy and momentum, from its strong and diversifying forest-based economy to the proliferation of community-led conservation and economic initiatives that are building a foundation for the region's future. We must continue to make investments in the region and its communities to maintain this positive direction. Programs highlighted in this document chart a direction forward for the region that the Alliance believes will ensure positive results.

Facing the Challenge of an Economic Downturn

Our nation faces a time of unique challenges that strain the capacity of the state and federal government to respond. It is critical in times like these that there be adequate funding available to make the investments required for the land and people of the Northern Forest – investments that have consistently paid off in the past. The federal government should continue to be a catalyst for investment in sectors that provide so many diverse benefits and should strive to fund the critical programs and projects at levels sufficient to ensure success.

Finding Your Voice for the Northern Forest

Interested citizens should become educated about the projects and legislation profiled in this publication and add their voices to the conversation. Congress will deliberate on its conservation and community enhancement spending plan for FY10 over the summer of 2009, and investments in our traditional conservation programs Forest Legacy and Land and Water Conservation Fund; the critically important State and Private Forestry programs; and the exciting new Northern Border Regional Commission, Community Forest and Open Space Conservation Program, and Community Wood Energy Program, will all bear fruit for the Northern Forest if we work together to ensure their success.

Additional information about how to become more involved is available at the Northern Forest Alliance website – www.northernforestalliance.org – or from any of the member groups listed on the back of this publication. We urge you to get involved and be an engaged citizen of the Northern Forest!



Summary: FY10 Northern Forest Requests

Program	State	Project	Acres	FY10 Request
Forest Legacy	ME	Katahdin Forest	19,647	\$ 3.7 M
Forest Legacy	ME	Rangeley High Peaks	13,446	\$ 3.46 M
Forest Legacy	NH	Cardigan Highlands	9,278	\$ 3.77 M
Forest Legacy	NH	Mahoosuc Gateway II	15,200	\$ 5.0 M
Forest Legacy	VT	Eden Forest	5,739	\$ 2.2 M
Forest Legacy	VT	Adams Pond	1,932	\$ 1.62 M
Forest Legacy	NY	Follensby Pond	14,600	\$ 7.0 M
FLP Total			79,842	\$26.75 M
LWCF	NH	Lake Umbagog NWR	3,090	\$ 4.5 M
LWCF	NH	Mahoosuc Gateway I	5,970	\$ 1.375 M
LWCF	NH & ME	White Mountain National Forest	680 total in multiple parcels	\$ 0.96 M
LWCF	NH, VT, CT, MA	Silvio O. Conte NWR	Varies by unit	\$ 2.965 M
LWCF	VT	Green Mountain National Forest	1,560 total in multiple parcels	\$ 2.25 M
LWCF	VT	Chateaugay - No Town NST	1,000	\$ 1.25 M
LWCF Total			12,300	\$13.3 M

Programmatic Funding Requests in FY10

Forest Legacy Program - \$125 Million

Land and Water Conservation Fund, Federal Program - \$325 Million

Land and Water Conservation Fund, State Program - \$125 Million

Northern Border Regional Commission - \$30 Million

Community Forest and Open Space Conservation Program - \$75 Million

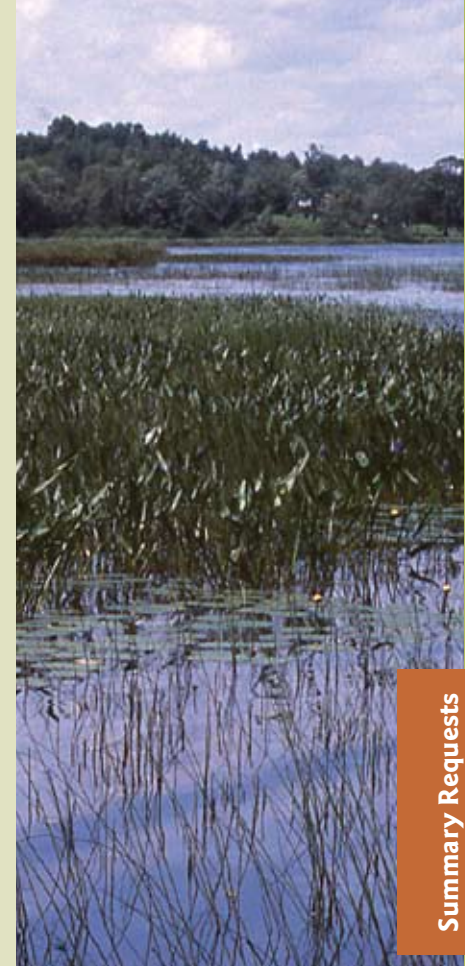
Community Wood Energy Program - \$5 Million

S&PF - Forest Stewardship Program - \$45 Million

S&PF - Urban and Community Forestry Program - \$36 Million

S&PF - Cooperative Lands Forest Health Program - \$53 Million

S&PF - State Fire Assistance Program - \$45 Million



Summary Requests

Report Design: RavenMark, Inc. / Printing: Queen City Printers Inc. / Editing: Bruce Clendenning

Photography: Bruce Clendenning, Jerry Monkman/EcoPhotography, Larry Ely, Carl Heilman II, Sean Sullivan/NH Timberlands Owners Association, Nancy Patch, Taso H, David Govatski, and Paul Tessier / Maps: Cathy Poppenwimer, Appalachian Mountain Club

Our thanks to all, as many images were either donated or greatly reduced in price.



Northern Forest Alliance

*Conserving our Northern Forest for strong communities
and future generations*

Adirondack Communities Advisory League
Adirondack Council
Adirondack Mountain Club
American Hiking Society
Appalachian Mountain Club
Appalachian Trail Conservancy
Association for the Protection of the Adirondacks
Audubon New York
Audubon Vermont
Biodiversity Legal Foundation
Catamount Trail Association
Chewonki Foundation
Citizens Campaign for the Environment
Conservation Law Foundation
Defenders of Wildlife
Environmental Advocates
Environment New Hampshire
Forest Guild
Garden Club of America
Gorham Trails Land Trust
Green Mountain Club
Greensboro Land Trust
Jay Ericson Photography
Keeping Track
Maine Appalachian Trail Land Trust
Maine Audubon
Massachusetts Audubon Society
MetaFore

National Parks Conservation Association
National Wildlife Federation
Natural Resources Council of Maine
Natural Resources Defense Council
New England Forestry Foundation
New York League of Conservation Voters
New York Rivers United
North Woods Stewardship Center
Residents' Committee to Protect the Adirondacks
Rural Vermont
Sierra Club
Student Environmental Action Coalition
The Wilderness Society
Trout Unlimited – Basil Woods Jr. Chapter
Trout Unlimited – National
Trust for Public Land
Trust to Conserve Northeast Forestlands
Vermont Alliance of Conservation Voters
Vermont Businesses for Social Responsibility
Vermont Land trust
Vermont Natural Resources Council
Vermont Public Interest Research Group
Vermont Woodlands Association
Vermont Woodnet
Vermont Youth Conservation Corps
World Wildlife Fund

Northern Forest Alliance
54 Portsmouth Street
Concord, NH 03301
(603) 834-3559
www.northernforestalliance.org

