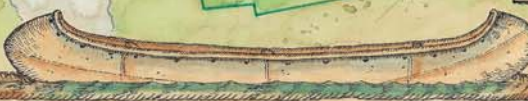


APPALACHIAN MOUNTAIN CLUB

MAINE WOODS INITIATIVE



- Roach Pond Tract - 28,000 acres (Potential AMC acquisition under Conservation Framework Agreement)
 - AMC Katahdin Iron Works Tract 37,000 acres (Purchased by AMC in 2003)
 - Existing Trail Network
 - Proposed New Trails - Conceptual (Subject to landowner and regulator approval)
 - Main logging roads into property
 - Self-service Cabin
 - Current Primitive Tentsites
 - Sporting Camps (lodge + cabins)
 - Location of AMC Canoes (for use by guests)
- * Limited Operations in Late 2007
- MAP DESIGN MIKE BEGAN
 UNAUTHORIZED USE PROHIBITED

PLEASE NOTE: Map does not show entire road or snowmobile trail network. Not for navigation purposes.

→ **CAMPING ON AMC PROPERTY**

Long Pond Campsite (KIJM)

- ▶ Drive-in, 3 tentsites (one walk-in)
- ▶ Boat access to Long Pond

Coyote Rock Campsite (KIJM)

- ▶ Walk or paddle-in, 3 raised tentpads
- ▶ Access to Long Pond

FEATURES, FEES AND PERMITS

All campsites are rustic and include fire rings, cedar picnic tables, and outhouses. Maintained by AMC cooperatively with KI-Jo Mary Multiple Use Forest (KIJM). Advance reservations are possible by calling the KI checkpoint in season at 207-965-8135. For camping fees see: www.northmainwoods.org/ki-jo/rates.html

→ **MOTELS, INNS AND BED AND BREAKFASTS IN THE AREA**

Moosehead Lake Region Chamber of Commerce

- ▶ www.mooseheadlake.org ▶ 1-888-876-2778

Piscataquis Chamber of Commerce

- ▶ www.spccc.org ▶ 207-564-7533

Maine Highlands

- ▶ www.themainehighlands.com ▶ 1-800-91-MOOSE

→ **MAINE GUIDE SERVICES**

Northwoods Outfitters, Greenville

- ▶ www.maineoutfitter.com ▶ 1-866-223-1380

Maine Guide Fly Shop & Guide Service

- ▶ www.maineguideflyshop.com ▶ 207-695-2266

Maine Wilderness Guides Organization

- ▶ www.mainewildernessguides.org/mwgo.htm

Mahoosuc Guide Service

- ▶ www.mahoosuc.com ▶ 207-824-2073

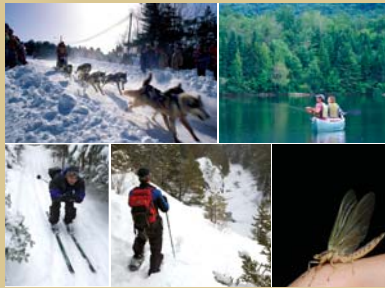
Song in the Woods

- ▶ www.songinthewoods.com ▶ 207-876-4736

Lone Wolf Guiding Service

- ▶ lonewolf@acmenet.net ▶ 207-997-3545

→ **ACTIVITIES ON THE PROPERTY**



- ▶ Hiking/Snowshoeing
- ▶ X-C Skiing
- ▶ Paddling
- ▶ Wildlife Watching
- ▶ Flyfishing
- ▶ Dogsledding

→ **OTHER ATTRACTIONS**

Katahdin Iron Works State Historic Site

- ▶ on KI Road, 11 miles from Brownville Junction
- ▶ www.maine.gov/doc/parks/index.html

KI-Jo Mary Multiple Use Forest

- ▶ www.northmainwoods.org/ki-jo/
- ▶ info@northmainwoods.org

→ **ADDITIONAL RESOURCES**

- ▶ **Southern Piscataquis Regional Recreation Map and Guide** Piscataquis County Economic Development Council, Univ. of Maine Cooperative Extension Service, AMC; www.outdoors.org/amcstore
- ▶ **AMC Maine Mountain Guide** (AMC Books, www.outdoors.org/amcstore)
- ▶ **Quiet Water Maine** (AMC Books, www.outdoors.org/amcstore)
- ▶ **River Guide Maine** (AMC Books, www.outdoors.org/amcstore)

Maine Woods Initiative



Sunset at Upper Lyford Pond

→ **RECREATION GUIDE**

2007



Appalachian Mountain Club

→ **AMC LODGING**



→ **1 Medawisla Wilderness Camps**

FEATURES

- ▶ Situated on shore of Second Roach Pond
- ▶ Road access year-round
- ▶ Seven private cabins with 1 to 10 beds, full linen service, shower, hot water, flush toilets (3-season), most with screened-in porch and wood stove. Electric power provided dusk to 9PM. Propane heat in most cabins.
- ▶ Full-service dinner, breakfast, trail lunch in main lodge
- ▶ Cabins have own kitchens and refrigerators for cooking your own meals in spring, summer, and fall.

ACTIVITIES

- ▶ Camps are near the shore of Second Roach Pond.
- ▶ Paddling on Second Roach from camps; other day paddling opportunities nearby. Free guest access to canoes and kayaks.
- ▶ Wildlife watching, including moose, loons and eagles.
- ▶ Over 36 miles of ski trails accessible from Camps.
- ▶ Fishing including brook trout and landlocked salmon
- ▶ Fishing, dogsledding or whitewater rafting with local Maine Guides
- ▶ Day trips to Little & Big Spencer Mountain, Nahmakanta Reserve, Baxter State Park

2007 SEASON SCHEDULE

- Full service: ▶ January 1 - March 31
- Full Service or Housekeeping: ▶ May 11 - Nov 18
- ▶ Mid-late December

→ **AMC LODGING**



→ **2 Little Lyford Pond Camps**

FEATURES

- ▶ Situated near shore of remote Little Lyford Ponds and West Branch of the Pleasant River
- ▶ Three-season road access, ski-in during winter
- ▶ Private cabins that feature 2 to 6 beds, a porch, wood stove, and gas lamps. Blankets and pillows provided.
- ▶ Bunkhouse with 12 beds—great for group outings
- ▶ Full-service dinner, breakfast and trail lunch in main lodge
- ▶ Hot showers and sauna year-round

ACTIVITIES

- ▶ Short loop hikes around Little Lyford Ponds or up Laurie's Ledge Trail to Indian Mountain
- ▶ Two mile hike to Gulf Hagas Rim Trail; four mile hike to AT
- ▶ Chairback and Whitecap available as day hike
- ▶ Free guest use of canoes on Little Lyford and Long Ponds
- ▶ Wildlife Watching: Moose, Loons
- ▶ Five miles of packed ski trails immediately surrounding Camps; unlimited backcountry skiing options.
- ▶ Fly-fishing for native brook trout in pond or West Branch of Pleasant River; day trip to Long Pond
- ▶ Explore Katahdin Iron Works State Historic site - on access road from Brownville Jct.

2007 SEASON SCHEDULE

- Full service: ▶ January 1-March 31
- ▶ May 11-October 28
- ▶ Mid- to late December

→ **AMC LODGING**



→ **3 Moose Point Cabin**

FEATURES

- ▶ Located on the shore of Long Pond
- ▶ Three-season road access with high-clearance vehicle, ski-in during winter
- ▶ Self-service cabin with 1 double bed, 2 bunkbeds (4 singles) & 1 futon (sleeps 6 comfortably).
- ▶ Blankets & pillows provided.
- ▶ Wood stove with wood, kindling and matches.
- ▶ Propane heater
- ▶ Fully equipped kitchen with propane cook stove, charcoal grill (no refrigerator).
- ▶ Water source available

ACTIVITIES

- ▶ Paddle on Long Pond. Free guest access to canoe
- ▶ Fishing on Long Pond
- ▶ Cross-country ski from winter trailhead along trout brook and around Long Pond; unlimited backcountry skiing
- ▶ Hike around Long Pond, or short drive to Gulf Hagas trailhead
- ▶ Dayhikes to Chairback Mtn and Whitecap
- ▶ Explore Katahdin Iron Works State Historic site

2007 SEASON SCHEDULE

- Self service (Call for availability at other times): ▶ January 1-March 31
- ▶ May 11-October 28
- ▶ Mid-late December

For Reservations call 603-466-2727 or request a reservation online at www.outdoors.org

For Reservations call 603-466-2727 or request a reservation online at www.outdoors.org

For Reservations call 603-466-2727 or request a reservation online at www.outdoors.org